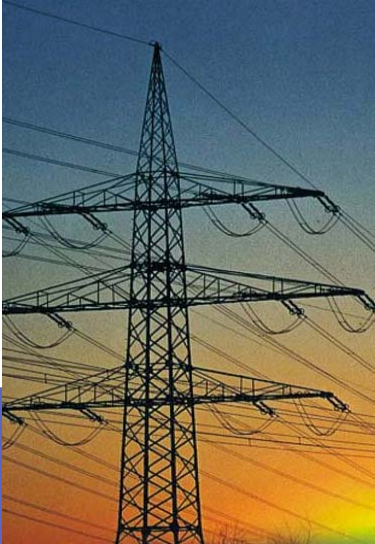


ABB Automation World
Michael Reuther

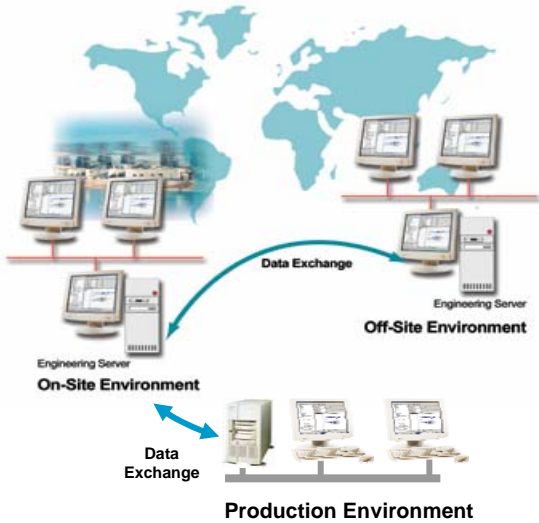


800xA News

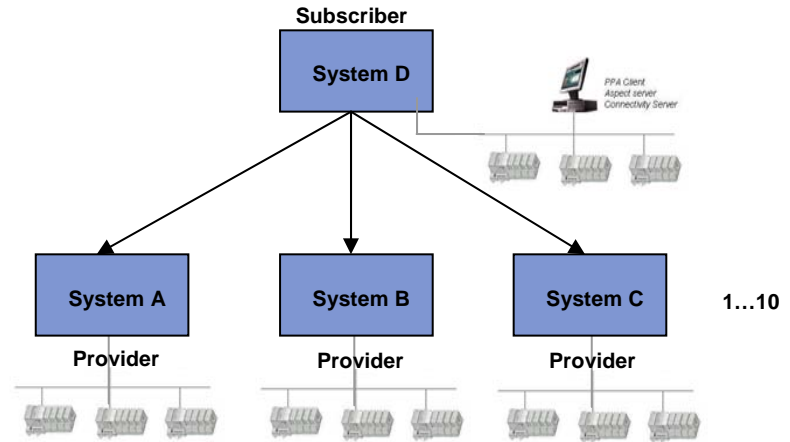


800xA System Version 5.0 Highlights

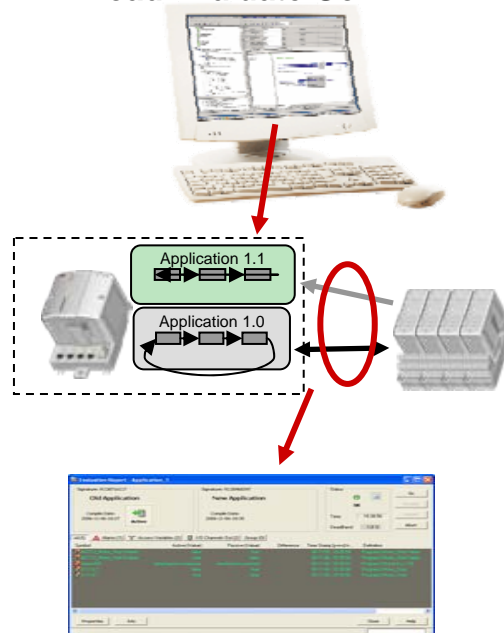
Remote and distributed engineering



Multisystem Integration



Load Evaluate Go



Extended Operations



800xA – ahead of the competition



Collaborative Process Automation System (CPAS)

“800XA system is extremely powerful and strongly corresponds to the ARC collaborative process automation system (CPAS) framework.” (ARC)

The integration features of 800xA is what others have as a vision of the future control system!



Electrical Integration

ABB is one of few companies that can offer DCS with integrated functions for control of electrical equipment!



Integrated Safety

Increased acceptance of and market demands for integration of DCS and Safety. ABB is the most experienced company with this regard, and no one else can integrate Control and Safety in the same controller!



Operator environment

Control room design, Extended Operator Workplace, and 800xA:s operator environment – simply the best on the market!





Power and productivity
for a better world™